



THE **ST. MATTHIAS**

Messenger

OCTOBER 2011

highlights



- † Annual Service of Remembrance Nov. 2
Pg. 3
- † Looking for Acolytes and Musicians
Pg. 4
- † Concert: . 24
Pg. 3
- ◆ New Youth Group activities planned
Pg. 5
- † Anchorhold studying book "Practice of Prayer"
Pg. 7

Messenger deadline:

Send your article/photos to Nancy Peterson via e-mail: peterson400@sbcglobal.net
By the third Wednesday of the month.

HAYRIDE & CHILI SUPPER



ALL PARISH HAYRIDE

Saturday, October 22 @ 2:00 pm

at Emslie Farms

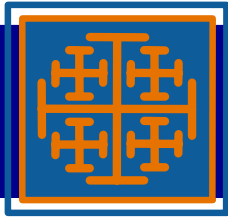
CHILI SUPPER to follow

(after the 5:00 service)

See the Fellowship Bulletin Board to sign up.



Proofs for our new church directory are on the table in the Tardiff Room. Please take a minute to look for your information and make sure it is correct. If you are not listed, please list your name on the correct page. We have been working on this data for the last year, so if you are not there, it is most likely because a data field needs to be changed.



By Fr. David Simmons



A reader wrote in to my "AskThePriest.org" blog with a Biblical Question:

"When Episcopalians say that the bible is largely allegorical as opposed to historical do they mean everything including the story of resurrection is allegorical or do they just limit the belief that the bible is allegorical to the old testament?" and follows up with "The expression I commonly see on church websites is 'we take the Bible seriously, but not literally'." So what does that mean?

Part of the problem is what we mean when we talk about reading the Bible "Literally." Due to the rise of Fundamentalism in the Twentieth century, a "Literal reading" is often a code word for the belief in the inerrancy of the text itself in every aspect, leaving no room for textual development or errors in copying the text. This way of treating the Bible is a recently-developed (20th century American) phenomena that is owed to the dominance of the Scientific Method as an underlying assumption of all of reality. People who treat the Bible as inerrant in all areas including history and science are projecting Enlightenment principles on a pre-Enlightenment text, something that is disrespectful to the text. Theologian Ruth Tiffany Barnhouse has remarked that literalism is to be regarded as "the bastard child of science and religion." It does both a disservice. When someone says they "Don't take the Bible literally," they are usually referring to this kind of belief that the Bible is inerrant in all aspects, that it has a plain meaning that transcends the culture and language the text was written in, and that we can interpret it (usually in English translation) without struggling with original setting or culture.

In pre-Enlightenment Biblical interpretation, a "Literal meaning" was considered to be the "plain reading" or original meaning. But that was considered to be only the most basic level of interpretation of the

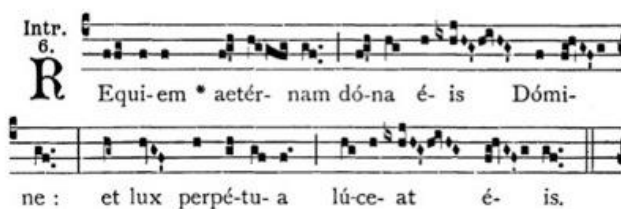
text. Following the idea of the rabbis of Jesus' time that scripture was a gem that could be turned to bring out different refractions of the true light, they worked in not only the literal level, but the Allegorical, Tropological and Anagogical senses. Sometimes the plain interpretation was considered to be the inferior interpretation. How did this work? pre-Enlightenment interpreters believed that the Holy Spirit worked within the community of the church to bring out the deepest, richest meanings of scripture.

So one problem with "Biblical Literalism" as we know it today is that it takes the text and pretends as if it were a moral or theological text written by a modern person grounded in empirical methods of knowledge. The authors of the Biblical texts lived under completely different assumptions about the nature of reality and the purpose of literature. The other problem with "Biblical Literalism" is that it leaves no room for the role of the Holy Spirit in the church. In order to interpret the Bible properly, we have to try to put ourselves into their world and understand the plain meaning for them. Luckily for us, we have a lot of great work on the part of Biblical scholars to stand on and don't have to figure this all out on our own. Then, through the community working with the Holy Spirit, we need to discuss how such scripture applies to us today. This, in my opinion, is what taking the Bible seriously requires.

In my experience, the vast majority of Episcopalians, both clergy and lay, believe that the physical resurrection of Jesus really occurred. The texts about the Resurrection can be read on many different levels, so therefore, it is both literal and allegorical.

David+

the Annual Service of Remembrance



St. Matthias Episcopal Church Chapel
Wednesday, November 2
6:30 P.M.

Join us for a candlelight service and reception.

Please get the names of those to be remembered to the church office by Tuesday, October 25 in order to have them included in the necrology by organist Craig Bodoh .

Scrip Orders!

If you have scrip orders, please enter them online or return orders and money in the offering plate on Sunday. Be sure to put them in an envelope that has "Scrip" clearly marked on it.

For more information on Scrip, look at the St. Matthias website <http://www.stmatthiasonline.org/> under stewardship.

Join our text-messaging group!

Receive important messages from the church, including weather cancellations, on your cell phone. Text "stmatthias" to (760)670-3130 to join!



ACOLYTES

Serving as an acolyte (Torchbearer) is a great way for your child to become involved in worship. We start at around 7 and have people all the way up into their adult years.

As a child gets older, we may train them as a thurifer (incense person), server, or when they reach sixteen, as a Eucharistic Minister.

Please let me know if you or any of your children are interested in joining this ministry.

David+



Call for Musicians!

Looking for a few people to sing or play hand bells and have fun! Please contact a choir member or Craig Bodoh, Director of Music.

Rehearsals for Christmas will beginning soon.

November 11

St. Matthias Episcopal Church

Corner of Main St. and East Ave.
Waukesha, WI, 53186



7:30 p.m.

Windy Hill Brass Quintet

This group is a community based ensemble of the University of Wisconsin Waukesha. The group is comprised of two faculty and three members of the greater Waukesha community. Led by UW Waukesha Professor of Music, **Dr. Craig W. Hurst on trumpet and flugelhorn** other members of the quintet are:

Sandy Frisque, horn

David Jensen, trombone

Brett Meyer, trumpet

Tom Patterson, bass trombone

The Windy Hill Brass Quintet performs a wide variety of literature ranging from music of the Renaissance through contemporary styles and includes jazz, ragtime and gospel music as well.

This concert is a fund raising event for the music department of St. Matthias
A post concert reception will be included with your admission.

To purchase tickets contact the church office at 262-547-4838

<http://stmatthiasonline.org/> for online ticket sales

Advance tickets:	\$15 adults
(purchased by one week prior	\$10 seniors
to the concert)	\$5 students

At the door:	\$20 adults
	\$15 seniors
	\$10 students

This concert is sponsored in part by:

Ameriprise 
Financial

Brian Prom

GAININGTIME.COM

Children's Christian Formation News

We started off the school year on September 11, enjoying meeting some new friends as well as catching up with old friends.

On our first morning the children made their own t-shirts with iron-on transfers. Some of them are pictured here trying the shirts on. When we think of things, and people, and activities that are special to us, Jesus is among those that are closest to our hearts, as each of us is loved by him. These shirts are collages each child made of some of their favorite things.

During the following 3 weeks we heard some of Jesus' teaching stories, or parables, about a vineyard owner. We learned about generosity, fairness, obedience to God, and how God cares for us so that we grow and bear fruit for him.

We welcome new families. Please join us on Sunday mornings starting at 9:00 am for ages 4 through 6th grade in the classrooms across from the parish office.

Nursery Available

This fall we are staffing our nursery with two Carroll University students. We're especially excited about this because it helps us follow the best practices of the diocesan safety policy of having 2 unrelated adults supervising our children. The nursery is available each Sunday for those of you with young children. The nursery will be open from 9:00 am for the Christian Education hour, all the way



through the 10:15 service. Parents, make sure to sign your children in so that we know their names and where you are in the event that we need to find you.

Children's Worship Bulletins

There are Children's Worship Bulletins for two different age groups and a jar with pencils on a table in the back of the church to help youngsters through the service.

Nancy Peterson

READ ABOUT OUR NEW COMBINED YOUTH GROUP

After some conversations with other local Episcopal Churches, a youth group has been formed to include all of our congregations. Those churches include St. Mary's in Dousman, St. Anskar's in Hartland, and St. Alban's in Sussex. It is for youth from 6th to 12th Grade. The main leader will be Gwen Ruedin, a part-time youth pastor who has been working at St. Mary's. Betsy and Steve from St. Matthias, will continue to advise and help with the combined group, as will Fr. David and Jeanne Kronebusch. We will be carpooling to meetings from St. Matthias, and will be asking parents to help chaperone and drive. All of the leaders and clergy involved in this are really excited. It will give us enough youth to do some more exciting things, including possible mission trips.

On **October 2** the group visited Lake Country Health and Rehab, and helped with an activity there.

Tentative schedule for the next several months:

October 23: Sunday, 12-3pm. Fall Yard Help! There are members of the parish and community that could use some help with their yards in the fall. We will meet at St. Mary's. Pick up - to be determined.

November 6: Sunday, 12-3pm. We will be at St. Mary's for a lesson.

November 20: Sunday, 12-3pm. We will be doing Thanksgiving baskets. Drop off and pick up at St. Mary's.

December 4: Sunday, 12-3pm. White Elephant/Christmas/Advent Gathering! Details to come.

January 7: Saturday, 7pm-8am. Lock in at St. Matthias.

January 22: Sunday, 12-3pm. Service. TBA later.

Pastoral Care

Hospital Calls

Clergy and our Parish, Nurse, Ms. Kathy Mallory, are available for hospital visitation when the church is notified. State and Federal confidentiality laws make it impossible for clergy to know whether one has been hospitalized. Please call the office to let us know the name of the hospital at which you are staying, and room number, in order to receive this healing ministry of prayer, anointing with holy oil and pastoral care.

Lay Eucharistic Visitors

Lay Eucharistic Visitors visit shut-ins regularly. If you know of someone who would like to receive Sunday communion, please contact the church office at (262)547-4838.

Emergencies

In the event of a pastoral care emergency you may reach the Rector most directly by calling his cell phone at (262)347-7446.

Prayer Requests

If you have a prayer request for yourself or on the behalf of others, please fill out the prayer request form in the back of the church and place it in the alms basin at the time of the offering, place it in the hands of an usher, or submit it to the church office.



October Birthdays

- | | |
|----|--|
| 1 | Paul Hunkins, Becky Kafer, Emily Shoemaker |
| 2 | Robert Breese, Paula Schwartz |
| 3 | Kay Haddenham |
| 4 | Kaitlin Lohr |
| 6 | Virginia Hoeft |
| 9 | Kristin Thomas, Bronwyn Lemm |
| 10 | Georganne Prom |
| 11 | Michael Pellechia |
| 13 | Clayton Schott |
| 14 | Jim Huisman |
| 15 | Brian Szczepanski |
| 16 | Jan Brethauer, Jennifer Lohr |
| 18 | Daniel Giles |
| 20 | Graham McKenzie, Emma Wallace |
| 21 | Nell Frey, Brian Nabak, Kevin Nabak |
| 23 | Harold Kuhne, Evan McKenzie |
| 24 | Dianne Larson |
| 25 | Bob Farina |
| 26 | Welcomes Evans, Joe Wilkiewicz |
| 27 | Gloria Hintz, Brendan Simmons |
| 31 | Scott Peterson |



ANCHORHOLD

During the next several Anchorhold meetings, we will be studying the book, "The Practice of Prayer" by Margaret Guenther. Guenther is one of the Episcopal Church's best known experts on prayer, and her book gives an introductory to the "Whys" and "Hows" of prayer. We will have copies for people to pick up on Tuesday, October 4.



What is an Anchorhold?

Anchorhold has multiple meanings in this context. In Church history, an anchorhold was a small building abutting a church where a type of hermit called an Anchorite (or anchoress) spent their lives in prayer, meditation, and giving spiritual direction to people who came to visit.

In our case, it is a group that meets to further explore prayer in our life as a parish. We meet for Evening Prayer once a month. Smaller groups may meet during the month

for prayer or working on projects like the Prayers of the People.

Why is this group needed?

While the weekly celebration of our Lord's resurrection on Sundays is our primary worship, prayer is the anchor that holds us to the rock of the church, Jesus Christ. Our lives both individually and as a parish are enriched when we pray for and are prayed for by others. In addition, time spent simply in the presence of God in still prayer enriches both the individual and the church. The Anchorhold is an organization that strives to improve our parish prayer life through worship, education and still prayer.

Who can attend?

All those who worship at St. Matthias Parish are welcome to attend any meeting of the Anchorhold. Prayer is the calling of the church and the possession of no one.

Messenger Deadline

NOTE: The Messenger is published 10 times annually. Look for the next issue in early November. Be sure to save the enclosed Ministry Schedule.

October 19: Article deadline (3rd Wed. of month) Please send your article/photos directly to Nancy Peterson via e-mail: peter-son400@sbcglobal.net

November 5: (first Saturday of the month) Messenger due in most homes.



How to reach us

Church Mailing Address: P.O. Box 824
Waukesha, WI 53187-0824

Church office E-mail: stmatthiaswk@sbcglobal.net

Church Website: www.stmatthiasonline.org

Church Fax Number: 262-547-4659

Visiting us in Waukesha
111 E. Main St. (East Ave. & Main St.)

Phone: 262-547-4838

Voice mailboxes:

Father David Simmons, Rector.....100
Craig Bodoh, Music Director103
Ginny Mack, Sexton104
Kathy Mallory, Parish Nurse106

Emergencies

In the event of a pastoral care emergency you may reach the Rector most directly by calling his cell phone at: (262)347-7446

Deadline for Service Bulletin

Please submit all items for the weekly service bulletin to the parish office at stmatthiaswk@sbcglobal.net or by calling 547-4838. **The deadline is Tuesday at 4 pm.** Copy may be edited to permit publication of maximum number of items.

Wardens and Vestry Members

Lee Dreyfus Jr.	Senior Warden (<i>term ends Jan. 2012</i>) 262-544-1104
Brian Prom	Junior Warden (<i>end Jan. 2014</i>) 262-782-4714 brianprom1@yahoo.com
Jeff Blodgett	Treasurer (<i>Ex-Officio, vestry appointed</i>) 262-408-8114
Harriet Schassberger	Fellowship (<i>end Jan. 2013</i>) 262-549-5179 harriet731@msn.com
Vicki Kutz	At Large (<i>end 2013</i>) 414-425-3553 vlkutz@wi.rr.com
Barb Heighway	Pastoral Care (<i>Jan. 2013</i>) 262-549-1722
Mary Bird	Worship (<i>end Jan. 2012</i>) 262-538-1906
Betsy Crosswaite	Youth Formation (<i>end Jan. 2012</i>) 262-544-4365 bcrosswaite@wi.rr.com
Robbi Heighway	Incorporation (<i>end Jan. 2012</i>) 262-549-3118
Catherine Clark	Outreach (<i>end Jan. 2014</i>)
Susan Kerr	Adult Formation (<i>end Jan. 2014</i>)
Betty Adams	At Large (<i>end Jan 2014</i>) 262-896-0491
Jeanne Kronebusch	Children's Formation (<i>end Jan 2014</i>)

How can I do my part?

If you're interested in serving the parish and sharing your time and talent to do God's work, contact Lee Dreyfus Jr., senior warden. Lee can be reached at 262-544-1104

St. Matthias Episcopal Church
P.O. Box 824
Waukesha, WI 53187-0824

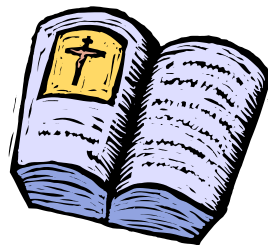
Non Profit Org.
U.S. Postage
PAID
Permit 403
Waukesha, WI

RETURN SERVICE REQUESTED

**DATED MATERIAL
USELESS IF DELAYED**

October 2011

Adult Forum



Adult Forum is being held at 9:00 am in the Undercroft.
Come on Sunday mornings at 9:00 am between the two services
for some Christian formation for yourself. Topics vary and are
noted in the Sunday service bulletin.

MEN OF MATTHIAS Card Sharks of

St. Matthias! The Men of Matthias will be playing Sheephead
on Friday, October 21, beginning at 7PM. A Nickel a point and
maximum of \$2. If you don't know how to play, you can sit in on
a round or two before you get fleeced...



HOURS

Church Office Hours
9 a.m.—12 p.m.
Tuesday through Thursday

SERVICES

Saturday
5 p.m. Eucharist

Sunday Morning Hours
starting September 11
8 a.m. Eucharist
10:15 a.m. Eucharist